

The service is informed by a family-centred, developmental approach to child health and wellbeing.

If there are developmental concerns, the first step is for a child to receive a referral from a GP or Paediatrician to participate in the service.

After a care plan is agreed upon, children and their families travel to Royal Far West in Manly for a week-long stay, during which they have access to a multidisciplinary team that includes:

- Developmental Paediatricians
- Child and Adolescent Psychiatrists
- Speech Pathologists
- Psychologists
- Occupational Therapists
- Social Workers
- Special Educators
- Dieticians
- Nurses
- Orthoptists
- Ophthalmologists
- Audiologists



Regional NSW is a wonderful place for a child to grow up. However, if your child is experiencing challenges with their developmental health, it can be extremely difficult to access the specialist care they need.

Right now, there are over 190,000* country kids across Australia who have health and developmental needs that are not being met because of where they live.

Access to the right support at the right time can reset the trajectory of a country child's life and that is where Royal Far West comes in. We have been providing vital health services for NSW country kids for almost 100 years and the need for our services has never been greater.

Royal Far West Centre for Country Kids

14-18 Wentworth Street, Manly NSW 2095

PO Box 52, Manly NSW 1655

Ph: (02) 8966 8500

E: intake@royalfarwest.org.au

www.royalfarwest.org.au



Scan QR code for referral form



Royal Far West
Children's health, country-wide

*2021 Australian Early Development Census (AEDC)

Child and Family Services

A child's journey



Royal Far West
Children's health, country-wide

Royal Far West's Child and Family service is a holistic multi-disciplinary service for country children with complex developmental, behavioural, and mental health needs. Our team of experienced health professionals specialise in child development, trauma-informed practice, and the holistic assessment and management of complex child health needs.

The service formally known as the Paediatric Developmental Program has three key components:

Assessment – a comprehensive multidisciplinary assessment to address concerns about a child's functioning and ability to meet expected developmental milestones.

Building capacity – assessing, strengthening and building the capacity of parents, carers, and local providers as part of the assessment process.

Connecting to care – unlocking transformative pathways by referring and connecting families with services to support them locally, through the Royal Far West NDIS program (if appropriate) or providing treatment options for clients who meet criteria.

For more information scan the QR code:



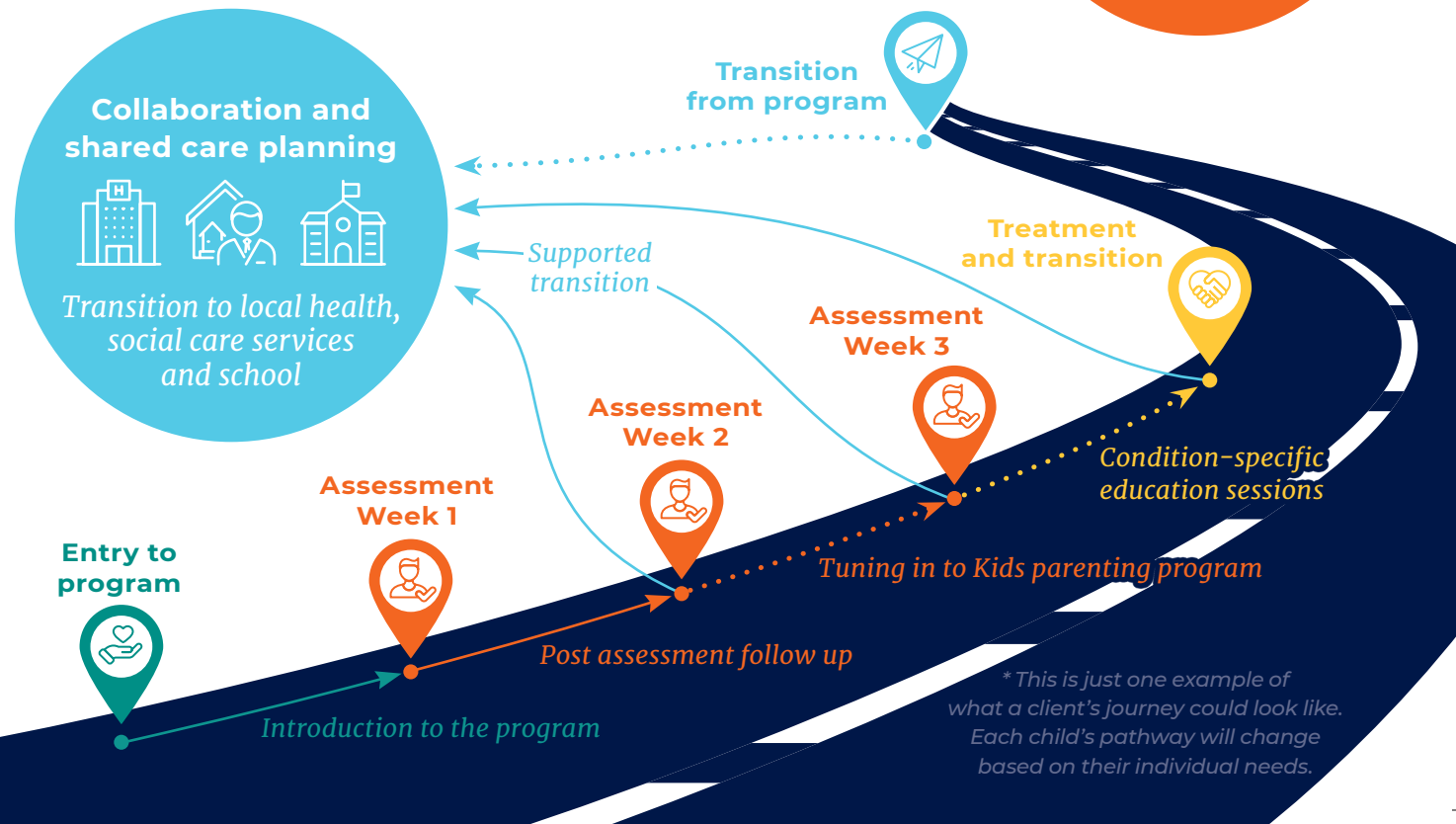
We can support children and their families either via online appointments or onsite in Manly.

Families attending our Manly campus stay in our housing facilities/lodge. When children are not in appointments, they attend the onsite NSW Department of Education School known as the Royal Far West School, and they can also participate in our recreational programs.

Having a school available means we can provide continued schooling for kids who are accessing our Manly-based programs, as well as their siblings.



A holistic service for country kids with complex developmental, behavioural, and mental health needs.



** This is just one example of what a client's journey could look like. Each child's pathway will change based on their individual needs.*